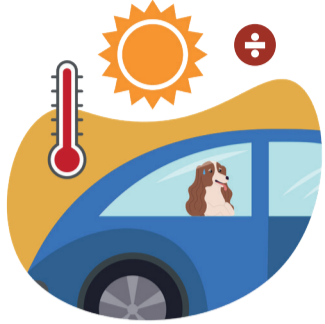


# GOOD WELFARE FOR DOGS



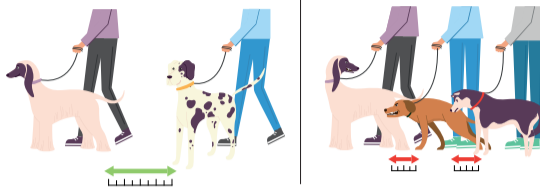
## NO DOGS IN HOT CARS!



Be responsible! Dogs must not be left unattended in hot cars at any time. If your car is air conditioned, leave a large sign about this in the car window including your mobile contact information.

DANSK KENNEL KLUB

## KEEP A SAFE DISTANCE



**✓** Dogs need personal space too. Please keep a safe distance to other dogs, handlers, and guests. We would like for everyone to have a good experience.

**⊕** Standing too close can stress, anger, or frighten dogs.

DANSK KENNEL KLUB

## EXERCISE AND DOG TOILET AREA



Take a break. Outdoor dog-toilet and exercise areas are available. We have made it easy – all you must do, is pick up the poop! 🐾

DANSK KENNEL KLUB

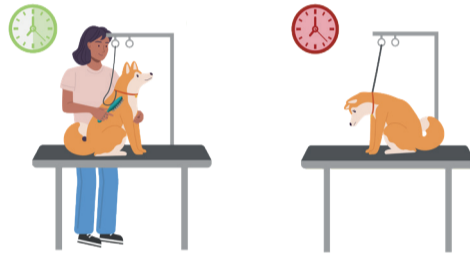
## GROOM, CLEAN AND GO AREA



Area for preparation of dogs. Temporary and shared use. Please note, stay close to your dog (never leave the dog unattended). Clean up area after use.

DANSK KENNEL KLUB

## WHEN YOUR DOG IS ON A GROOMING TABLE



**✓** Stay very close to the dog when on a grooming table. Take a break from grooming and offer the dog water and a walk.

**⊕** Dogs must not be left unattended on a grooming table wearing a grooming leash.

DANSK KENNEL KLUB

## WHEN LIFTING YOUR DOG

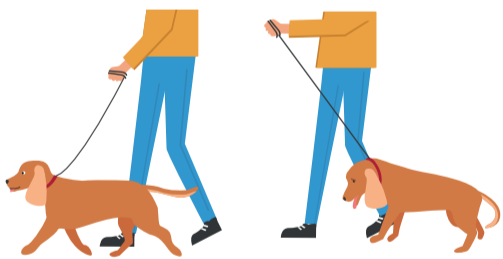


**✓** Lift your dog in a way that supports the dog's body in a comfortable way.

**⊕** Picking up dogs by their necks and/or tails is not permitted.

DANSK KENNEL KLUB

## WHEN SHOWING YOUR DOG

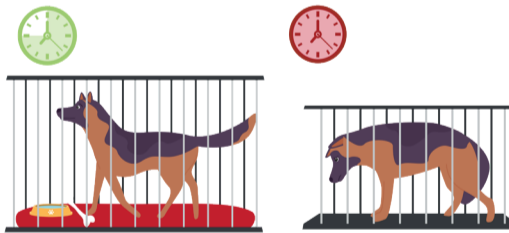


**✓** Dogs should be running at free will. If the leash is tight it is because the dog has chosen to pull in a forward manner.

**⊕** It is not acceptable to drag og handle the dog in a way which causes its feet not to touch the ground.

DANSK KENNEL KLUB

## WHEN YOUR DOG IS IN A CRATE

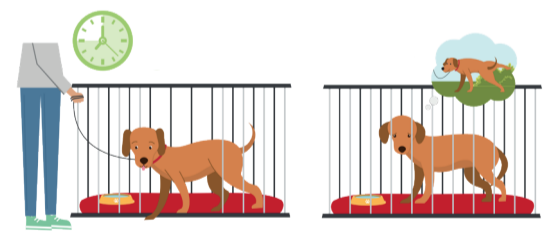


**✓** Large enough that the dog (or dogs) can comfortably sit, stand, and lay down. Remember water *inside* the crate. Take the dog out to exercise and toilet approximately every hour.

**⊕** The use of small cages and cages with wire / false floors are not permitted.

DANSK KENNEL KLUB

## DOG IN A CRATE: REMEMBER WATER AND EXERCISE OFTEN



**✓** Always remember water inside the crate. Take the dog out to exercise and toilet approximately every hour during the day.

**⊕** The dog must not be left in the cage without water and for many hours at a time.

DANSK KENNEL KLUB

## WARM-UP AREA



Your dog is an athlete – use the warm-up ring to get ready to shine. Please note, that the warm-up rings are shared by all exhibitors, so please be considerate.

DANSK KENNEL KLUB

## WATER ACCESS AREA



Water points are accessible in all exhibition halls. Please note, that dogs must have access to water also while being crated.

DANSK KENNEL KLUB

